

## Core Principles

The *Early Childhood Colorado Framework* is based on and guided by these principles:

- Whole child and family centered
- Prenatal through age eight
- Strengths based
- Culturally relevant and responsive
- Outcomes focused
- Informed by evidence based and promising practices
- Cross-sector collaboration

# Early Childhood Colorado Framework

A SHARED VISION

This *Framework* is a shared vision for Colorado's young children and their families. It guides planning and mobilizes action to ensure all children are valued, healthy and thriving. The *Framework* is embraced by the Early Childhood Leadership Commission, foundations, state agencies, nonprofits and early childhood stakeholders across Colorado.

For more information visit [earlychildhoodframework.org](http://earlychildhoodframework.org)

ADOPTED JULY 2008 | UPDATED JULY 2015

# Strategies for Action

- Connect and Empower Families
- Build Community Capacity
- Implement Quality Standards
- Make Data Informed Decisions
- Develop and Retain the Workforce
- Support Consumer Affordability
- Advance Sustainable Business Practices
- Encourage Public Private Approaches
- Pursue Continuous Quality Improvement
- Ensure Coordinated Services
- Promote and Share Knowledge

# Fundamentals

- Strong Partnerships
- Sufficient Investments
- Sound Policy
- Robust Public Engagement
- Shared Accountability
- Effective Leadership
- Relevant Education Opportunities

# Outcomes ► access, quality and equity

- Family Support & Education
- Health & Well-Being
- Learning & Development

### ACCESS

- Family engagement and leadership opportunities exist within programs, schools and communities
- Services and supports promote the well-being and resiliency of parents and caregivers
- Family friendly policies and practices exist in the workplace

- Comprehensive health coverage and services are consistently utilized by pregnant women and children
- Integrated and preventive maternal and child physical, behavioral and oral health services are available
- All settings promote mental health and well-being through early identification, consultation and treatment

- Education, coaching and ongoing training exist for caregivers, teachers and other professionals
- Learning experiences and environments are high quality, developmentally appropriate and affordable

### QUALITY

- Family knowledge and capacity support children's healthy development and learning
- Families advocate for high quality comprehensive services and supports that lead to future success

- All health care providers, including mental health, deliver coordinated, family focused care
- Settings and practices promote strong relationships, social and emotional development, appropriate nutrition and physical activity

- Formal and informal care environments and education practices reach the highest levels of quality
- Adults understand and support children's learning and development, including social and emotional
- All settings provide effective transitions across and within programs, schools and systems

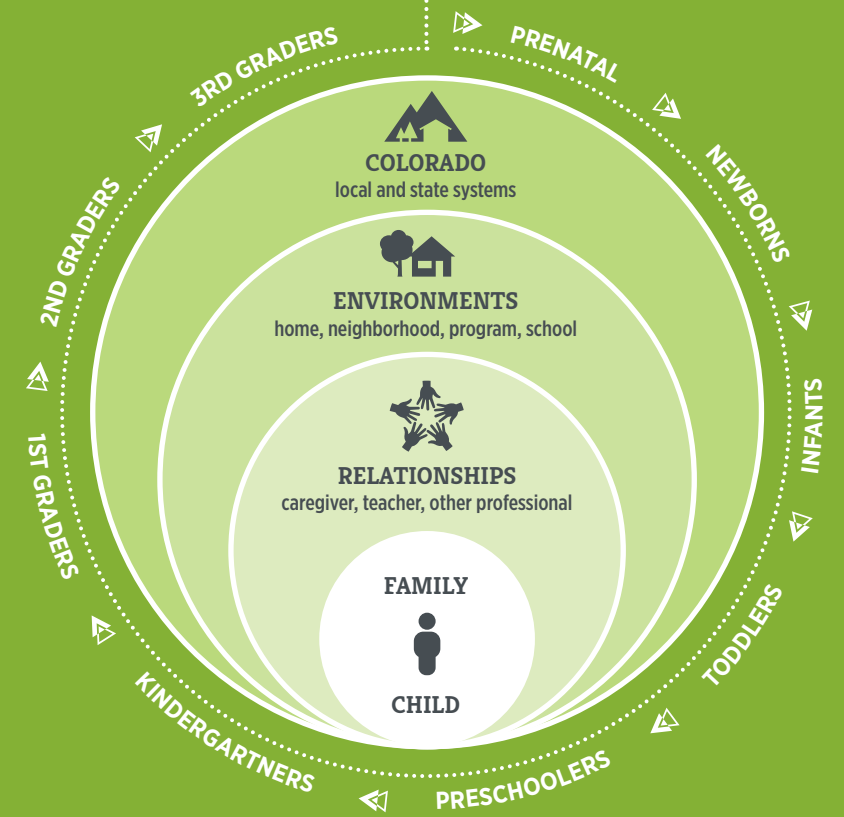
### EQUITY

- Education, employment, housing, financial and legal supports contribute to family economic security
- Families, including those with high needs, experience timely and coordinated services and supports

- Families have the ability to plan the number and timing of their children
- All environments are safe, free of toxins, have affordable foods and offer physical activity
- Children with special health, behavioral or developmental needs receive individualized services and supports

- All children are ready for school and achieving by 3rd grade regardless of ability, race, place, income, language and culture
- Children, including those with high needs, receive timely, comprehensive and affordable academic services and transition supports

# all children are valued, healthy and thriving



# Results

- CHILD**  
Young children reach their developmental potential and are ready to succeed in school and in life
- ENVIRONMENTS**  
Environments that impact children are safe, stable and supportive
- RELATIONSHIPS**  
Adults are knowledgeable, responsive and interact effectively with and on behalf of children
- COLORADO**  
Localities and the state attain economic and social benefits by prioritizing children and families